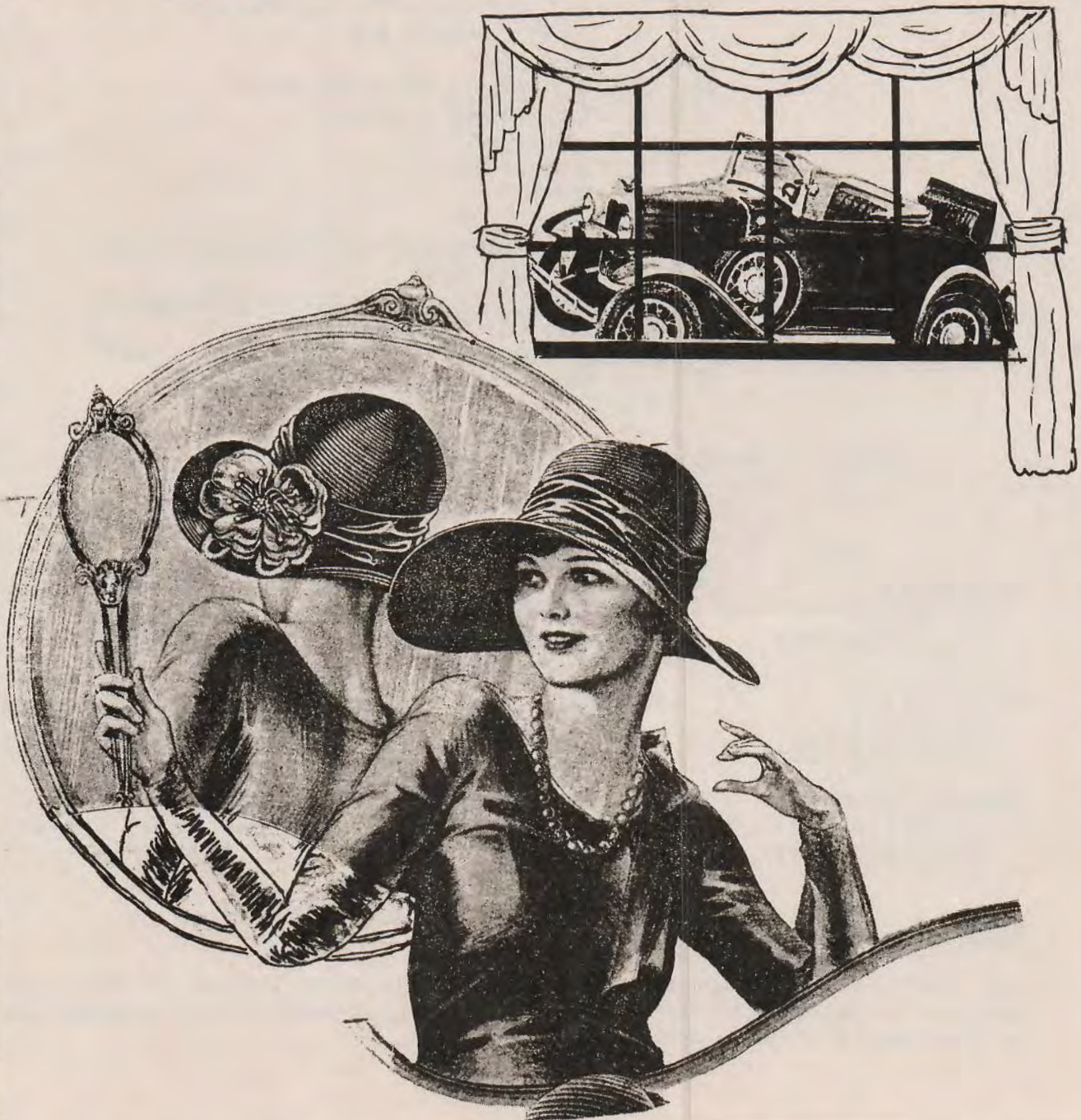


# The Distributor

## Orange County Model A Ford Club

VOLUME XXIX      MAY 1989  
ISSUE 5

EDITOR: JIM KHALAF  
PUBLISHERS: BOB & KARYN SITTER



## TOURS, SPECIAL EVENTS, AND SWAP MEETS

- May
- 7: Ford Fun Day  
at Whittier Narrows
  - 10: Reservation Deadline for camp-out
  - 11: General Meeting at 7:30 PM  
935 N. Cambridge  
Orange, Ca
  - 12: Seminar & Ladies Auxiliary at 6:30 PM  
Wade & Jan Roberts' home (see map)  
606 Dahlia Ave  
Corona Del Mar (714) 672-5457
  - 13: Fullerton Founder's Day Parade  
10:00 AM to 4:00 PM
  - 14: Mothers Day
  - 18: Board Meeting at 7:30 PM  
at Jim Khalaf's house  
1781 Derby Drive  
Santa Ana, Ca  
731-8064
- June
- 3: Car Show at the City Shopping Center
  - 4: Pomona Swap Meet
  - 11: Deer Park Spring Concours d'Elegance  
Deer Park - Escondido Ca
  - 17: Summer Tour to Breckenridge Colorado
  - 17: Car Show at Tustin Heights  
11:00 AM to 3:00 PM
- July 28-30: Camp-out at Julian

## BOARD OF DIRECTORS

President  
Jim Marsh  
(714) 531-7237

Secretary  
Terry Lucas  
(714) 633-0390

Treasurer  
Bob Kelley  
(714) 642-4367

Activities  
Joe Wavra  
(714) 549-2881

Activities  
Paul Steed  
(714) 998-0394

Technical Advisor  
Lou Spielberger  
(714) 650-0974

Special Events  
Les White  
(714) 870-6417

Editor  
Jim Khalaf  
(714) 731-8064

Publishers  
Bob and Karen Sitter  
(714) 777-2486

## EDITOR'S NOTE

The 1989 roster is available and will be distributed at the next general meeting (one per member / family). Additional copies may be purchased at \$1 each.

## MOOSE'S MESSAGE

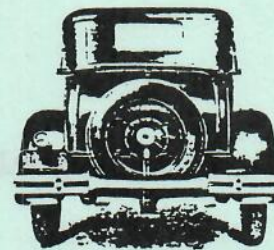
Jim Marsh

We just got back from the first annual (I think annual) tour. The tour was very well attended, especially for the A "FIRST". Approximately 65 model A's were in attendance and about that many again without model A's. There were 11 representatives of the Orange County Model A Club. Attending were Gary & Shirley Hubbell, Jim & Bev Marsh, Richard, Jean, and Debbie Parrish, Jim, Claire, Spaeth, and their son Tim and his wife. The event itself was very low key. The only planned activity was a Saturday box lunch. This was held at Katheryns Landing on Lake Mojave about 10 miles north of the landing. At the box lunch they had three peoples choice trophies. This was the only judging they had. I think it is a great idea to have a show at Laughlin. You have a lot to do (or not do, if you wish); the hotels are super, good buffets, river dam tours, and a lot of sun. I for one will go next year.

I would like to thank all those who helped make this years pancake breakfast the biggest and the best ever, especially Joe Wavra and Paul Steed. It takes a Lot of planning and running around to get everything in order for this event. I would also like to thank all the local area model A clubs (too many to name) for their support. Without you, we would not have the success that we have had.

I would like to thank all of those who contributed and donated gifts and prizes to raffle. Your support is greatly appreciated. The next time you as a club member need a model A part or any other part or service for you autos, make an effort to patronize those who supported our club! Hope to see you all at the Regional "Fun Day" at Whittier Narrows, Sunday May 7th. This is the Southern California Regional meet. It should be fun and well attended.

P.S. - A Navy colored windbreaker size 46 was left at the Breakfast. Jim Marsh has it.



THE END

## SOMETHING SPECIAL

Les White

We have several cars shows planned for May and June. May 13 is the Fullerton Parade and Street Fair. The car show is from 10 AM - 4 PM. Bev Marsh agreed to help in the food booth. If you could spend one or two hours please call Bev or Martha white.

June 3rd & 4th, there will be a car show at the City Shopping Center. The cars will assemble in the Mall Friday night at 6:00 PM.

Then on June 17th, there is a car show at Tustin Heights from 11 AM to 3 PM.

The McDonalds' car show is tentatively set for July. This is contingent on the construction at the Placentia store. It will coincide with the Grand Re-opening of the store.

We need cars for all of these shows, so please call Les White if you would like to help. Remember that the car show are an important source of revenues for our club. You will be helping your club.

### ON THE ROAD AGAIN

Joe Wavra

#### YUMA TOUR - April 6th

Five intrepid model A's with their drivers and passengers started out at 8:30 PM on Wednesday evening with the idea of "beating the heat". Two cars Dan and Valerie Simmons, and Joe and Rickie Lane stopped for the night in El Cajon and planned to meet up with the other cars the next day. The other three cars; Larry and Gerry McKinney, Dick and Jane Riha, and Joe and Marion Wavra went on to El Centro and arrived at 9:30 AM on Thursday.

We all meet the next day as planned and off we went all 5 cars to Yuma. At the produce

check point, disaster struck on of the cars. Dan's "Rose" lost #3 rod only about six miles from Yuma. Leaving Valerie and Dan, the rest went on to Yuma where we dispatched a tow truck to bring them to the motel.

A motel seminar was held in the parking area and after the pan and head were removed, the offending piston and rod were taken to a local mechanic for babbiting. All this excitement with the temperature at a record 108 degrees. Friday was spent by the ladies on their annual Mervins tour.

The rod and piston was returned late Friday, so Saturday till about 1 PM was spent by Dick, Dan, and Larry reassembling the engine and finished in time for a nice BBQ at the local RV park on the shore of the Colorado river.

The trip back home was started about 5 AM on Sunday and after a pleasant drive, all five cars and their occupant arrived home at about 1:30 PM.

#### CARLSBAD TOUR - April 17th

Carlsbad antique race tour took place on Sunday and three model A's from Orange County Model A Club enjoyed the "drags" and picnic lunch along with family and friends. Larry McKinney's "Loosey" and Steve Balmer "Mr Toad" participated in the racing.

## Kite Flying

The kite flying and picnic at Laguna Niguel park was very enjoyable. Terry Lucas brought some old kites with 1957 Chevy promotion on them. There was a clown at the park which painted the childrens faces.



## UP-COMING EVENTS

May 7th is the Fun Day at Whittier Narrows, sponsored by the San Fernando Valley Chapter. This is a day that lets all persons, desiring to do so, drive their A's, go on a picnic, take a chance on a raffle, compete in gymkhanas, or just have some fun "out doors"... We are putting on one of the events, our favorite, the plumbers friend and ball project.

Let's show our support for a fun day and drive our model A. We are leaving Orange Mall at 8:30 AM. Bring a picnic lunch and be prepared for a day of Model A fun (see reduced flyer

in this paper).

Saturday May 13 is set aside for the Fullerton parade. We should leave Les and Martha White's house at 8:30 AM. Call Martha for directions.

June is still open for tours and other activities. Anyone with ideas for possible activities should contact either Paul Steed or Joe Wavra.

SUMMER  
TOUR



The summer tour is planned for June 17th to Breckenridge Colorado. Anyone interested please call Joe Wavra.

## Let's GO CAMPING

Don't forget to call Bob Kelley about the summer camp-out at Julian camp-out July 28th, 29th, and 30th. Cost is \$11 per night. Contact Bob Kelley at 642-4367 for payment and any other information. Reservation must be in by May 10.

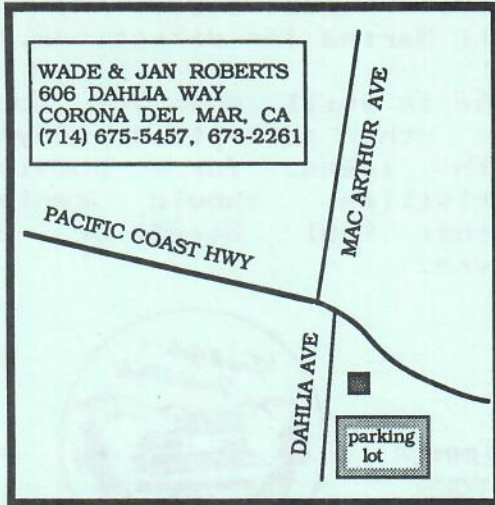
## LET'S GET TECHNICAL

Lou Spielberger

The May seminar will be on checking out why Wade Roberts

engine gets hot & freezes up.  
The seminar will be at Wade's house (map below).

**WADE & JAN ROBERTS**



The June seminar will be on front ends. We will assemble a complete one. Bring your Pitman arms, steering arms, bushings, and spindles. We will install new balls and bushing parts at cost. This will be at Bob Ferazzi's house.

\* \* \*

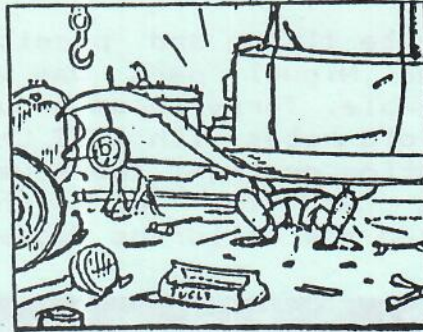
Lou and his wife Pearl celebrated their 60th wedding anniversary by taking a Caribbean cruise. We celebrated this occasion at the Lucas's home. More details and pictures in the next issue.

**GENERAL MEETING**

There will be a shoe box swap meet at our next general meeting in May. Sooo bring your goodies.

Dick Riha will present the story of his '30 coupe - complete with pictures and slides.

**A TIP FROM LOU**



Now that the tour season is upon us, How would you like to soundproof your model A and make it quit riding with doors that close like a five hundred freezer... Well, here's how: Go to Vintage Auto Parts and get a package of "sound pads" a new product on the market manufactured by Mortell Company 550 No. Hobbie St. Kankakee, Ill 60911. This product comes in sheets about 4" X 1" and has it's own glue backing which sticks to any surface. It's very pliable and when placed inside a door make it close so quiet that you won't believe it. Try it, you will like it.

**LADIES AUXILIARY**



The four hour CPR course will be given by the Red Cross during the Friday May 12

Technical Seminar. It will begin at 6:30 PM at the Sherman Gardens Patio Room. The technical seminar will be held on the same grounds (Wade and Jan Roberts' home). Both seminars are open to men and women.

We have to know how many people will be attending. Either pay Bev Marsh \$20 per person at the next General meeting or make arrangements with Bev (731-737).

NO LATER THAN MAY 3thd

### BOARD MEETING

Terry Lucas

The meeting was called to order at 7:45 PM by Jim Marsh. The secretary and treasures's reports were read and approved. The pancake breakfast was reviewed. Several recommendations were made to make the lines move faster.

Activities reported the upcoming regional meet. Joe Wavra reconstructed some trophies donated by Ray Griffin, for the gymkhanas. Bob Kelley made a motion that a \$25 restaurant gift certificate be purchased for a door prize for the event. It was seconded by Paul Steed and carried by a majority vote. Joe will be purchasing a limited number of tickets for the Angel baseball game on August 18th. Tickets will be made available at the May

General Meeting, or you can call Joe Wavra.

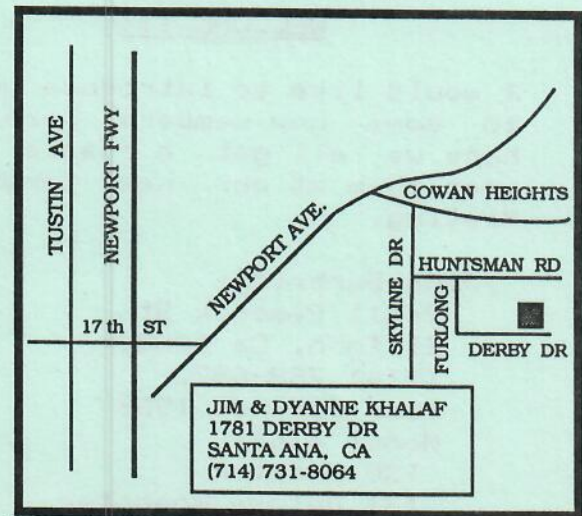
The next general meeting will feature a shoe box swap meet. Dick Riha will present the story of his '30 coupe - complete with pictures and slides. Bev March volunteered to run the booths at the Fullerton Parade.

Les White is still looking for cars to support his activities. It was stressed that these fund raising mall shows, etc are a major contribution to the financial health of the club. It is also a good deal of fun to display your cars as well as good advertising for your club.

Joe Wavra reported on the upcoming national meet in San Diego. The Orange County Chapter will be running the trouble shooting tent and the ladies will assist in the greetings and registrations.

The next board meeting will be held at Jim Khalaf's home on May 18th at 7:30 PM.

### **JIM & DYANNE KHALAF**



For 1990

*It's California!*



*Hosted by Queen Mary Chapter*



Yes, I want to be an "Early Bird" for the 1990 Convention!!!  
Send me the NEWSLETTER and early Registration for the Hotel an  
Convention. And I want the "Early Bird" Button!!!  
Here is my \$6.50 check payable to QUEEN MARY MAFCA

My Name is \_\_\_\_\_  
Address \_\_\_\_\_  
M.A.F.C.A. Chapter \_\_\_\_\_ Send To: "Early Bird"  
I added \$1.50 for an extra Button \_\_\_\_\_ P.O. Box 4044  
Carlsbad, CA 9200.

THE RESTORER - MAR/APR 1989

I am sure as you know the 1990 convention will be in San Diego. The Queen Mary is hosting this event and they are looking for volunteers to help out. We are encouraging our member to join the Queen Mary chapter and help out. Application will be available at the next general meeting.

### WELCOME !!!

I would like to introduce you to some new members here. I hope we all get a chance to meet them at our next General Meeting.

John Burbridge  
24411 Peacock St  
El Toro, Ca 92630  
(714) 768-0872  
Year Joined: 1989  
Model A(s):  
'30 Phaeton  
'31 Deluxe Roadster

-----  
Bill and Diana DuCoing  
1037 Rashford Dr.  
Placentia, Ca 92670  
(714) 966-8351  
Children: Brent, Kacie  
Year Joined: 1989  
Model A(s):  
'29 Coupe  
'29 Roadster  
-----

Randy and Diana Ema  
142 N. Cyprus  
Orange, Ca 92666  
(714) 633-3883  
Children: Tami  
Year Joined: 1989  
Model A(s):  
'29 Tudor Sedan  
-----

F.D. "Red" Kiscar  
9431 Oma Place  
Garden Grove, Ca 92641  
(714) 539-2915  
Year Joined: 1989  
Model A(s):  
'31 Slant Window Sedan  
-----

Carl Riggins  
19722 Hillock View Plaza  
Yorba Linda, Ca 92686  
(714) 970-8450  
Year Joined: 1989  
Model A(s):  
'28 Roadster (Jennie)  
'29 Fordor Sedan  
-----

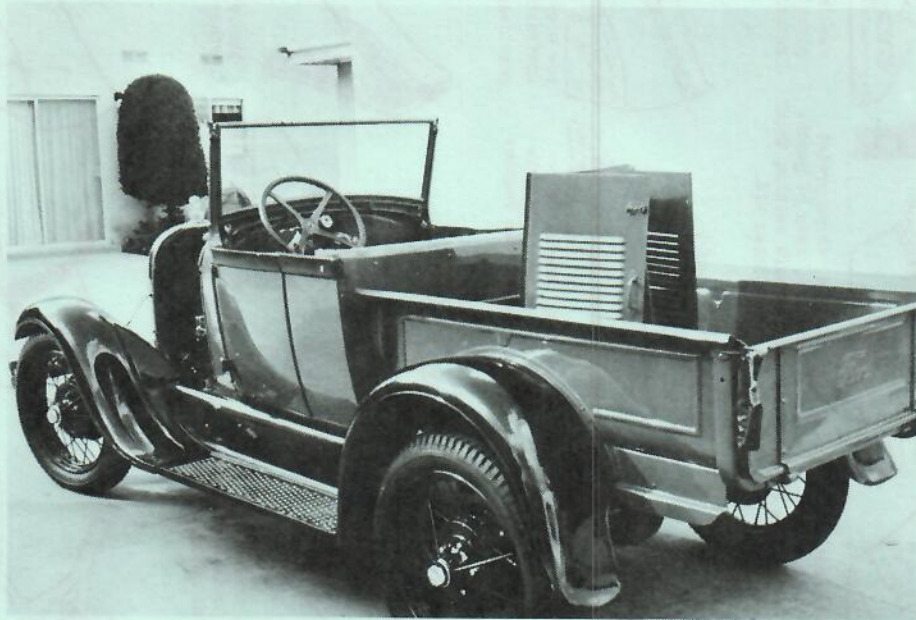
Steve Schley  
1101 S. Grand Suite K  
Santa Ana, Ca 92705  
Year Joined: 1986  
Model A(s):  
'30 Fordor Standard  
-----

Don and Debbie Steel  
11921 E. Comstock Ave.  
Garden Grove, Ca 92640  
(714) 758-9882  
Year Joined: 1989  
Model A(s):  
'31 Coupe  
-----



SPOT LIGHT ON Keith Brush

By Mary Brush



Keith and I joined the Orange County chapter of the Model A Ford Club last November after moving to Fullerton. Keith had previously been involved with the Big Bear Lake Antique Car Club and we still associate with members.

Keith's interests in old cars goes back quite a few years. His father started restoring Model T's when Keith was 5 years old. Keith owns a 1929 Roadster pick-up which he acquired before he was in high school. Keith's dad found the truck in an orange orchard in the City of Orange and persuaded the owner to part with it. Keith and his dad worked on the truck and got it running and that was Keith's transportation through out high school.

Six years ago Keith decided to

restore the A. He's been able to work on it part time and he is just now nearing completion. It's running and just needs a few cosmetic things to be completed.

I am frequently amused by Keith's ability to spot an old car. We can be driving down the freeway or walking down the street and he will point out these old cars that I never would have noticed. He says "he smells them".

Keith and I are both looking forward to the car's completion and joining the club on it's outings.

\* \* \*

I hope you all join me in welcoming Keith and Mary to our club.

# -A Lines-

## SHOES

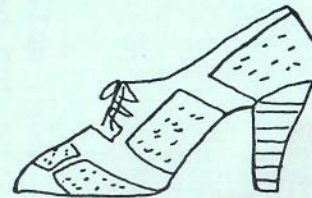
Ladies' dress shoes were made of velvet, crepe de chine, satin moire and every type of cloth and leather. The four basic types were the single and "T" strap slipper, the sandal, pump and oxford. There were really no flat heels except on bedroom slippers or sport shoes. Some sport oxfords had two inch heels, as shown above. The open toe or heel were unknown. Buckle closings had generally replaced the button on straps.

In 1928 black or tan was basic for daytime with any color of kid, satin or metal for evening. New for evening in 1929 was a metal brocade in silver and gold with silken embroidered flowers. Bags came to match with beads added to the design. Also new in 1929 was the suede oxford, usually trimmed with lizard, kidskin, or both. A new medium heel was called "Continental". The opera pump was dressed up with jeweled clips or large buckles.

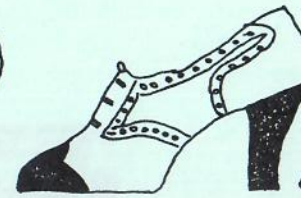
In 1930, most of the heels were higher to go with the newly lengthened skirts. While the unadorned opera pump was a favorite with some, the majority shown have the large buckles or a tiny bow of leather or metal to the side. The "T" strap slipper was not as popular as before. Bright colors, red, green and blue, were good fashion along with the popular brown and white "Spectator" shoes. A darker brown was being used than in 1928 and 29. The metallic shoes were still great for evening, especially when combined with crepe de chine and dyed to match the gown.

Some brands from this period are Red Cross, Arch Preserver, Enna Jetticks, Ground Gripper, Foot Health, La Cross, Savon and Cantilever.

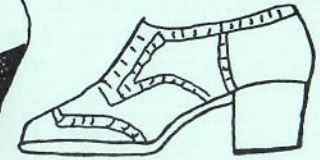
Shoe brand names and advertising reflect the emphasis on comfort: "If you cramp your feet, you cramp your style"; "Aching feet mean an aging face"; and Helen Morgan's testimonial, sung to the lyrics of a song from "Showboat"="Fish gotta swim and birds gotta fly...but nobody's gotta keep a corn...just say 'Blue-Jay' to Mr. Drug Store man! "



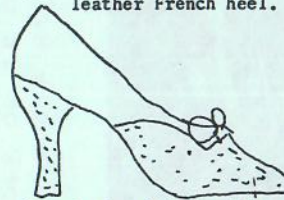
High heeled, cut out oxford of beige suede with lizard applique for trim & solid leather French heel.



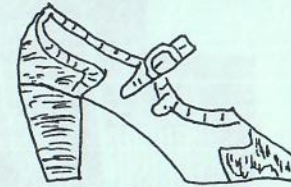
High heeled, three eyelet tailored tie, vamp of parchment kid. Toe & back section of chocolate brown kid.



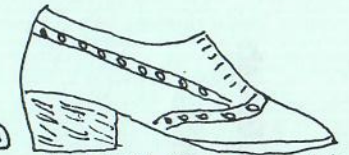
saddleback oxford of natural pigskin & brown leather with rubber sole.



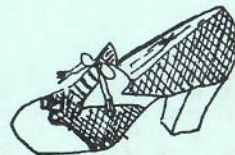
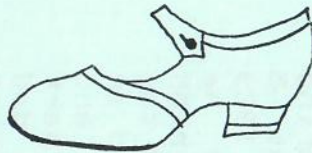
Pump & tie of beige kid & natural water-snake



One strap shoe of beige calf with perforated trim of chocolate brown leather



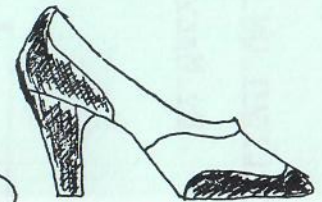
Low heeled sports shoe, with contrasting shades of beige deerskin, gray deerskin and black calf.



Two strap street shoe with modified Louis heel, strap trimming of natural lizard



high cut out pump of beige kid, brown kid strap trim, buckle, and modified french heel.



Pump of white suede, dark brown leather vamp, heel and heel covering



New "Continental" heel suede oxford trimmed with lizard.



Opera Pump with bow.



Strap cut out, of cocoa brown kid trimmed with natural lizard in a leaf design and gold piping.

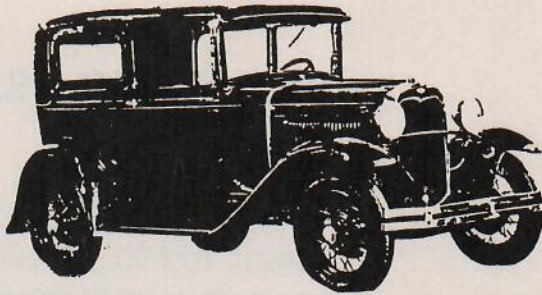


Strap cut out, of soft green kid, with applique design of opalescent kid and high french heel.



An Oxford tie with medium heel either of black kid with gray and watersnake trim, or brown with beige and watersnake.

Credits to Flap To Flip/Willamette Valley Chapter Salem, Oregon



1930 AA truck  
 Unrestored with new engine  
 (50 miles).  
 Asking: \$1,500  
 Call: John Kuhn  
 (714) 962-5342

FOR SALE

1931 Model A pickup truck  
 Completely unrestored  
 from Utah.  
 Asking: \$5,000 OBO  
 Call: Fred Drobik  
 (714) 591-8131

1928 Ford Fordor  
 Rose beige & seal brown  
 Overdrive, 12V with Alt,  
 Hydraulic brakes, V8 trans,  
 4:11 rear end, 56 ford  
 steering box, and full  
 pressure model C engine.

Asking: \$11,000

1930 Ford Tudor  
 Black, WW, red wheels,  
 Overdrive, V8 Trans,  
 56 ford steering box,  
 Hydraulic breaks, 12V  
 alternator. low mileage  
 on A inserted engine.

Asking: \$10,000

Call: Dan Simmons  
 (714) 968-7466

1928 Sport Coupe  
 Right hand drive,  
 5 yr old restoration  
 with new engine.

Asking: \$5,000  
 Call: John Kuhn  
 (714) 962-5342

1972 Ford E2 restoration  
 ranchero GT model, 400 cu in,  
 2 brrl C-6 complete  
 Asking: \$3,000  
 Call: Myke Wingett  
 (714) 542-3089

WANTED

Model C water pump  
 Call: Wade Roberts  
 (714) 675-5457  
 (714) 673-2261



1989  
 HOST

INVITES  
 YOU TO

MAY 1989						
1	2	3	4	5	6	7
8	9	10	11	12	13	14
15	16	17	18	19	20	21
22	23	24	25	26	27	28
29	30	31				



**'A' Ford Fun Day**

**MAY 7**      9 AM - 3 PM

Whittier Narrows  
 Recreation Area

Southern California Regional  
 Model A Ford Clubs

- Gymkana  
Games  
RAFFLES
- Goodie Bags  
TROPHIES
- PHOTO  
OPPORTUNITIES

**Family Fun**

Bring a picnic

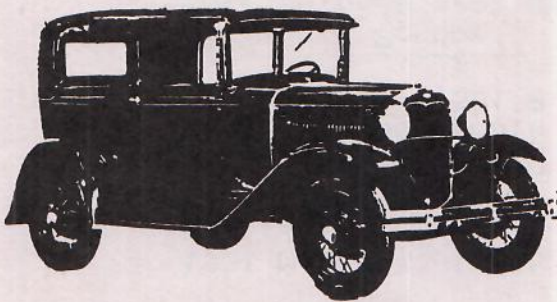
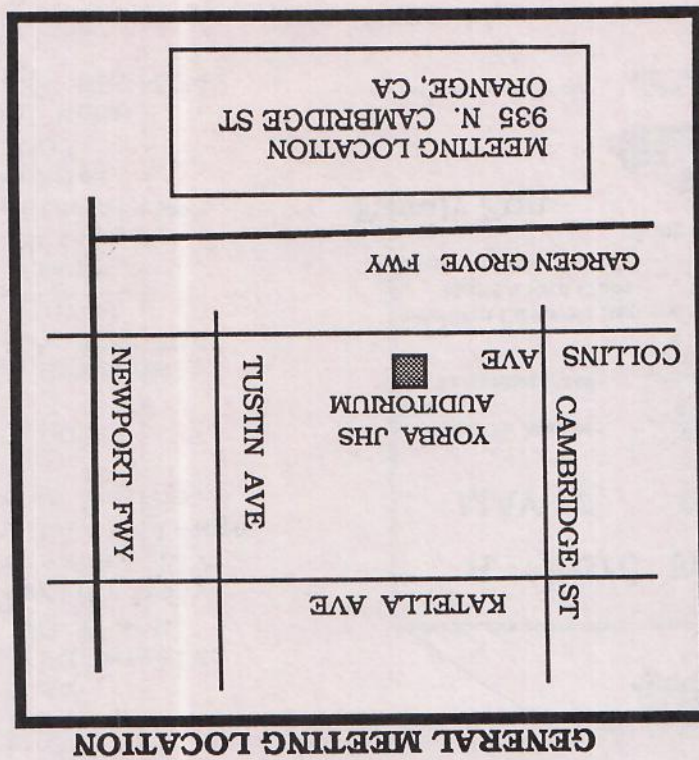
Bring the Kids



For more information, contact:

Chuck Miller  
 (818) 785-5623

Hank Sorney  
 (818) 996-1666



MAFCA  
ORANGE COUNTY CHAPTER  
POST OFFICE BOX 10595  
SANTA ANA, CA 92711

**First Class Mail**